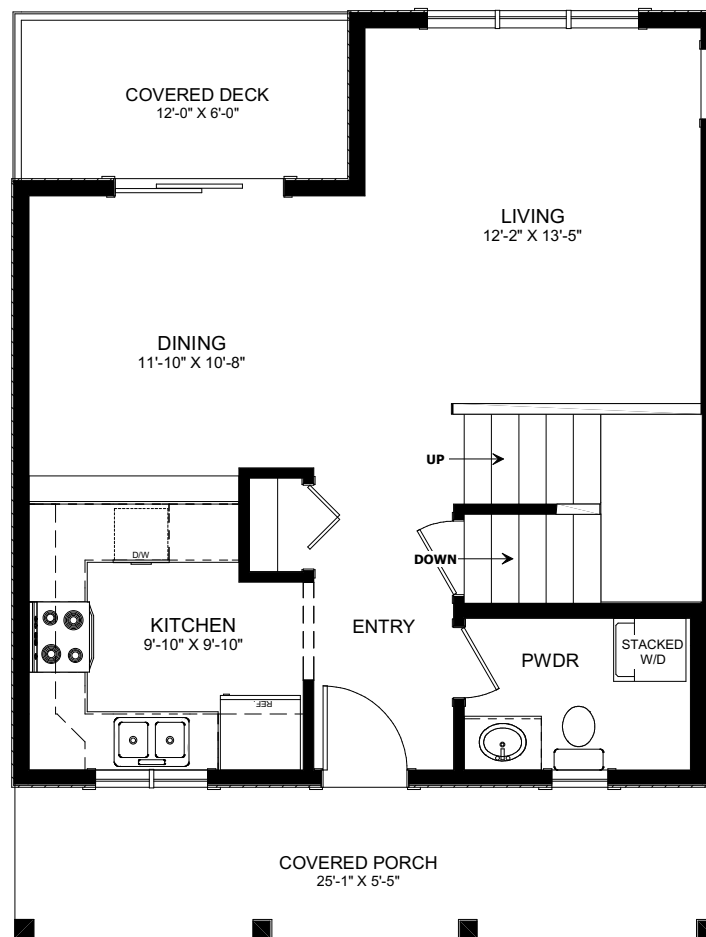




THE FOXTAIL

1042 SQ FT
TWO STOREY

2 BED
1.5 BATH
25'-0" X 33'-0"



MAIN FLOOR
LIVING AREA
616 sq ft
INCLUDING 53 sq ft STAIRWELL



NEW DAWN
DEVELOPMENTS

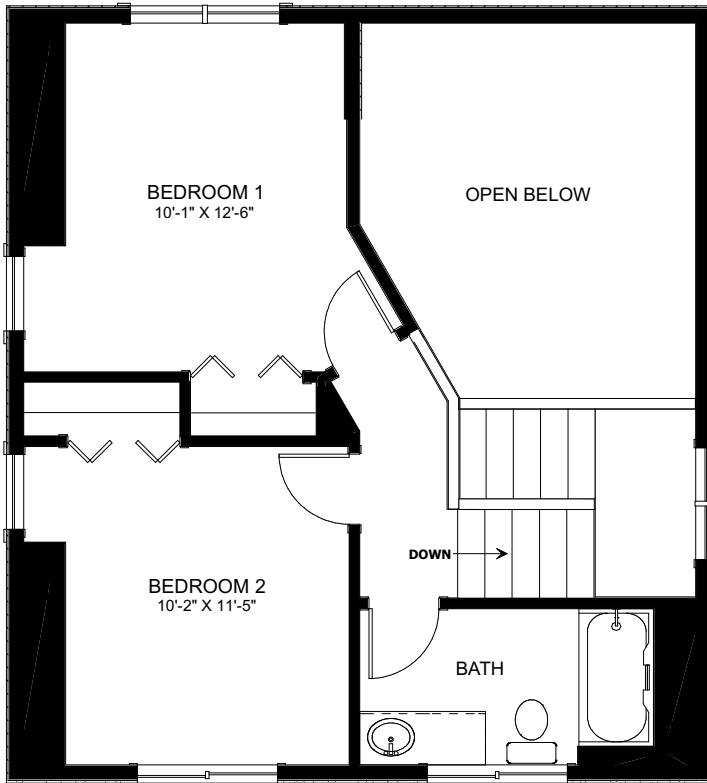
CALL US TODAY: 250-489-1519
WWW.NEWDAWNDEVELOPMENTS.COM

FLOOR PLAN HIGHLIGHTS:

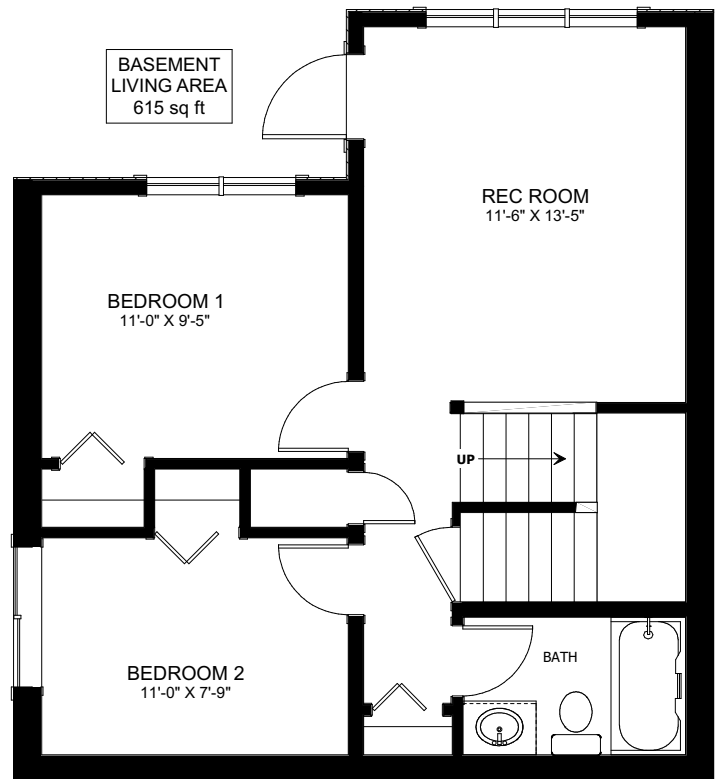
- COZY LOFT BEDROOM
- MAIN FLOOR POWDER ROOM
- LARGE FRONT PORCH
- VAULTED CEILING IN LIVING ROOM
- TWO FULL BATH
- LARGE WINDOWS

OPTIONAL UPGRADES:

- DEVELOPED BASEMENT WITH ADDITIONAL TWO BEDROOMS, REC, BATH & WALKOUT
- REAR COVERED DECK
- OPEN RAILINGS
- FIREPLACE IN LIVING ROOM



UPPER FLOOR
LIVING AREA
426 sq ft



NEW DAWN
DEVELOPMENTS

PLANS AND ELEVATIONS ARE APPROXIMATE AND DISPLAY NON-STANDARD FEATURES.
ELEVATIONS MAY VARY BY COMMUNITY & THE BUILDER RESERVES THE RIGHT TO
MAKE MODIFICATIONS WITHOUT NOTICE. ALL FLOOR PLANS AND ELEVATIONS ARE
THE EXCLUSIVE PROPERTY OF NEW DAWN DEVELOPMENTS. ALL RIGHTS RESERVED,
INCLUDING THE RIGHT OF REPRODUCTION, IN PART OR IN WHOLE.
LAST UPDATED, MAY 2021